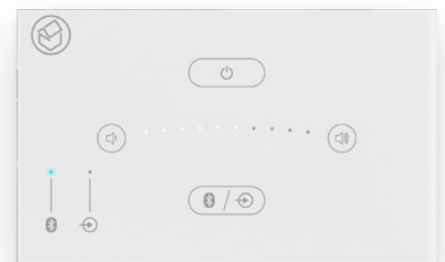




# SYSTEMLINE E50W

## BUILT-IN BLUETOOTH HI-FI SPEAKER SYSTEM

E50W is an elegant, splash proof, built-in sound system featuring Bluetooth and TV sound connectivity – with either touch panel or contactless gesture control operation.



Kitchen



Bathroom



Bedroom

# SYSTEMLINE E50W

## Key Features



### SUPERB SOUND QUALITY

Supplied with either single splash proof (IP54) rated speaker\* or a choice of single, pair or 4 high output ceiling speakers from multi-award winning Q Acoustics



### SPLASH PROOF

IP54 rated wall panel and speakers\* for safe bathroom installation



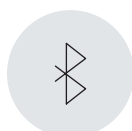
### WIPE CLEAN

No need to worry about sticky fingers in the kitchen, the E50W surface can be wiped clean



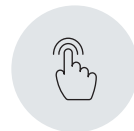
### GESTURE CONTROL

Adjust the volume and skip tracks with intuitive, contactless hand gestures.



### BLUETOOTH

Bluetooth connectivity for iPhones, iPads, iPods and Android devices allow you to stream both music and radio



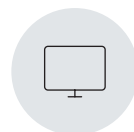
### TOUCH PANEL CONTROL

Power, volume, input selection and play/pause



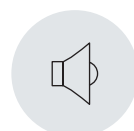
### SIMPLE TO INSTALL

E50W comes complete with speakers, speaker cables and back box, so you have everything you need to get up and running



### TV SOUND INPUT

Connect your TV to the rear of the control panel and enjoy an immersive cinematic audio experience



### REAL STEREO SOUND

Bringing quality audio to every corner of the larger spaces in your home

\* Single IP54 rated QI50CW Q Acoustic weatherproof speaker included in E50W bathroom pack

### Product codes

**SE0560** E50 White Stereo Ceiling Speaker Pack

**SE0565** E50 White 4 Ceiling Speaker Pack

**SE0570** E50 White Bathroom Speaker Bundle

**SE0567** E50 White Single Ceiling Speaker Pack

**SE0550** E50 White Unit (Keypad And Cables)

**armourHOME**

[armourhome.co.uk](https://armourhome.co.uk)

[sales@armourhome.co.uk](mailto:sales@armourhome.co.uk)

Sales and technical support 01279 501 111